



**FITTING INSTRUCTIONS FOR EH0067BK EXHAUST HANGER**  
**DUCATI PANIGALE 959 '16-**



**THIS KIT CONTAINS THE ITEMS PICTURED AND LABELLED BELOW.**  
**DO NOT PROCEED UNTIL YOU ARE SURE ALL PARTS ARE PRESENT.**

Please note that the way the kit is packed does not necessarily represent the way of mounting to the bike.

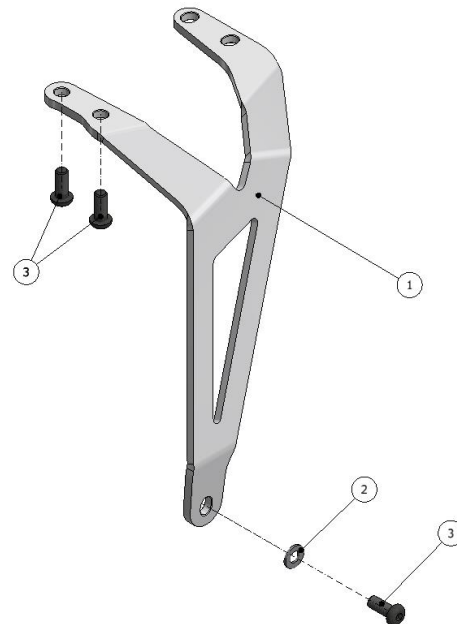
THE PARTS SHOWN MAY BE REPRESENTATIVE ONLY (FOR CLARITY OF INSTRUCTIONS ONLY)

**LEGEND**

- ITEM 1 = EXHAUST HANGER (HB0067) (x1).
- ITEM 2 = M8 WASHER (x1).
- ITEM 3 = M8 x 20mm LONG BUTTON HEAD BOLTS (x3).

**TOOLS REQUIRED**

- Set of metric Allen keys to include 5 & 6mm A/F sizes.
- Socket set to include 12mm socket & wrench.



R&G Racing  
Unit 1, Shelley's Lane, East Worldham, Alton, Hampshire, GU34 3AQ  
Tel: +44 (0)1420 89007 Fax: +44 (0)1420 87301 [www.rg-racing.com](http://www.rg-racing.com) Email: [info@rg-racing.com](mailto:info@rg-racing.com)



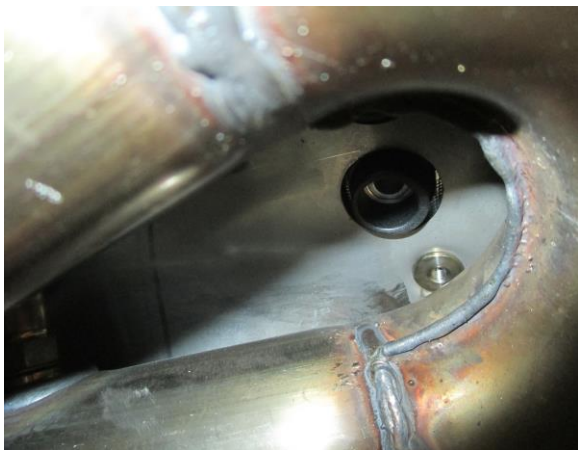
Please note that in cases where kits are packed with rubber washers holding the components onto the bolt – *the rubber washers should be thrown away!*



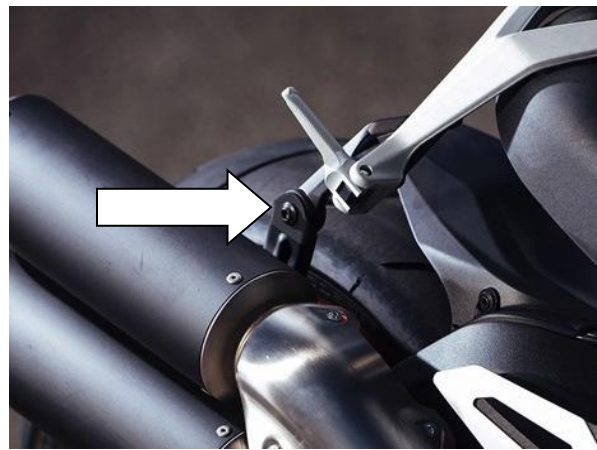
Picture 1



Picture 2



Picture 3



Picture 4



Picture 5



Picture 6

## **FITTING INSTRUCTIONS**

- To fit the R&G Exhaust Hanger the OEM pillion footrest mounting bracket needs to be removed.
- To do this, remove the two mounting bolts at the rear of the pillion footrest mounting bracket, as shown in picture 1.
- Now remove the two front mounting bolts. These can be accessed from underneath the exhaust heatshield via two holes, as shown in pictures 2 & 3.
- Remove the nut and bolt that secures the exhaust in place onto the pillion footrest mounting bracket, as arrowed in picture 4.
- With the pillion footrest bracket now loose, allow the exhaust heatshield to drop onto the exhaust to give enough access to carefully remove the pillion footrest mounting bracket from the rear, as shown in picture 5.
- Take the R&G Exhaust Hanger and fit it the same way as the pillion footrest mounting bracket were removed. Offer into position between the heatshield and subframe, ensuring the exhaust mounting hole is sitting on the inside of the exhaust mount, as shown in picture 6, before loosely fitting one M8 x 20mm long button head bolt and M8 washer through the hole before fitting the OEM nut onto the exposed thread on the rear.
- Re-use the two front mounting bolts and locate through the heatshield, then through the exhaust hanger and loosely tighten into the subframe mounts.
- Fit the two remaining M8 x 20mm long button head bolts through the two rear mounts on the exhaust hanger before loosely tightening into the subframe.
- Ensure the exhaust hanger is correctly fitted before tightening all five bolts.
- Please ensure when the motorcycle is being used that no parts are in such a position that they may collide/damage other bike parts (this is particularly important if using after-market cans or exhaust systems).

***Please note that it is your responsibility to ensure that no part of the exhaust hanger or exhaust assembly fouls or comes into contact with other parts of the machine. Do not ride the motorcycle until this aspect has been verified and you have compressed the rear suspension (if appropriate to the design of the motorcycle) to test this thoroughly.***

ISSUE 1 22/002/2016 (AR)

### **CONSUMER NOTICE**

The catalogue description and any exhibition of samples are only broad indications of the Products and R&G may make design changes which do not diminish their performance or visual appeal and supplying them in such state shall conform to the order. The Buyer acknowledges no representation or warranty (other than as to title) has been given or will apply to the Products other than those in R&G's order or confirmation and the Buyer confirms it has chosen the Products as being of merchantable quality and suitable for its particular purposes. Where R&G fits the Products or undertakes other services it

R&G Racing

Unit 1, Shelley's Lane, East Worldham, Alton, Hampshire, GU34 3AQ

Tel: +44 (0)1420 89007 Fax: +44 (0)1420 87301 [www.rg-racing.com](http://www.rg-racing.com) Email: [info@rg-racing.com](mailto:info@rg-racing.com)



shall exercise reasonable skill and care and rectify any fault free of charge unless the workmanship has been disturbed. The Buyer is responsible for ensuring that the warranty on the motorcycle is not affected by the fitting of the Products. On return of any defective Products R&G shall at its option either supply a replacement or refund the purchase money but shall not be liable if the Products have been modified or used or maintained otherwise than in accordance with R&G's or manufacturer's instructions and good engineering practice or if the defect arises from accident or neglect. Other than identified above and subject to R&G not limiting its liability for causing death and personal injury, it shall not be liable for indirect or consequential loss and otherwise its liability shall be limited to the amounts paid by the Buyer for the Products or the fitting or service concerned. These terms do not affect the Buyer's statutory rights.

**R&G RACING RETURNS POLICY (NON-FAULTY GOODS)**

Returns must be pre-authorized (if not pre-authorized the return will be rejected). Goods may only be returned direct to us if they were purchased direct from us (customer must prove if necessary). Otherwise to be returned to original vendor. Goods must be in re-sellable condition, in the opinion of R&G Racing. All returns are subject to a 25% restocking and handling fee (25% of the gross value exc. P&P – at the prevailing price at time of purchase). The customer must pay any and all carriage charges. No returns of discontinued products, unless within 14 days of purchase. This policy does not affect your statutory rights and does not refer to faulty goods.



**NOTICE DE MONTAGE EH0067BK SUPPORT POT D'ÉCHAPPEMENT  
DUCATI PANIGALE 959 '16-**



**Le kit contient les articles exposés ci-dessous, vérifier que toutes les pièces soient présentes avant de procéder au montage.**

La façon dont le kit est emballé ne correspond pas forcément à la façon de monter les pièces sur la moto.

**LES PARTIES PRESENTEES PEUVENT ETRE UNIQUEMENT REPRESENTATIVES (POUR LA CLARTE DES INSTRUCTIONS UNIQUEMENT)**

**LEGENDE**

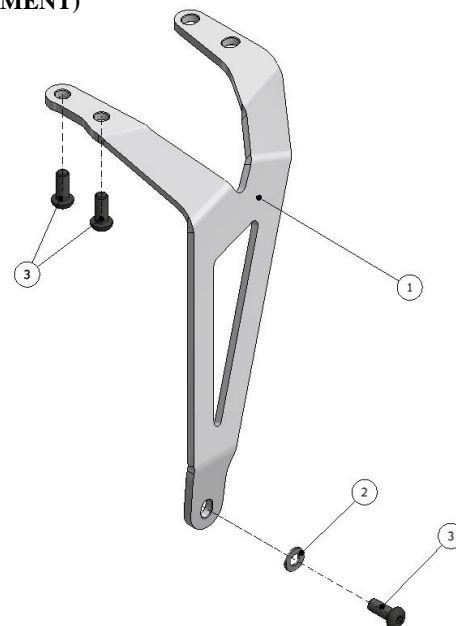
ARTICLE 1 = SUPPORT ÉCHAPPEMENT (HB0067) (x1).

ARTICLE 2 = M8 RONDELLE (x1).

ARTICLE 3 = M8 x 20mm BOULONS (x3).

**OUTILS REQUIS**

- Clés Allen 5 & 6mm.
- Clé et douille 12mm.



R&G Racing  
Unit 1, Shelley's Lane, East Worldham, Alton, Hampshire, GU34 3AQ  
Tel: +44 (0)1420 89007 Fax: +44 (0)1420 87301 [www.rg-racing.com](http://www.rg-racing.com) Email: [info@rg-racing.com](mailto:info@rg-racing.com)





Notez que si les kits sont emballés avec des rondelles en caoutchouc servant à tenir les composants, *ces rondelles doivent être jetées!*



Photo 1



Photo 2

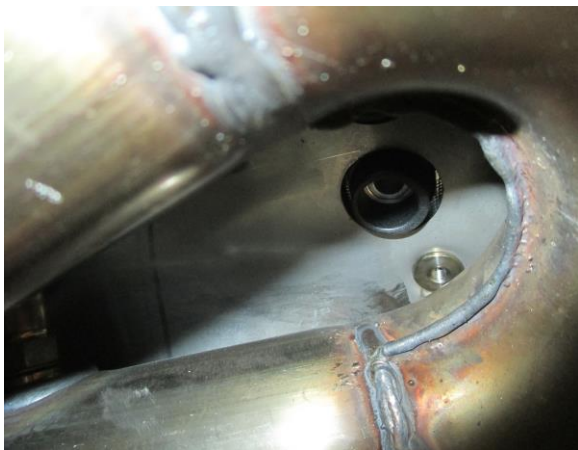


Photo 3

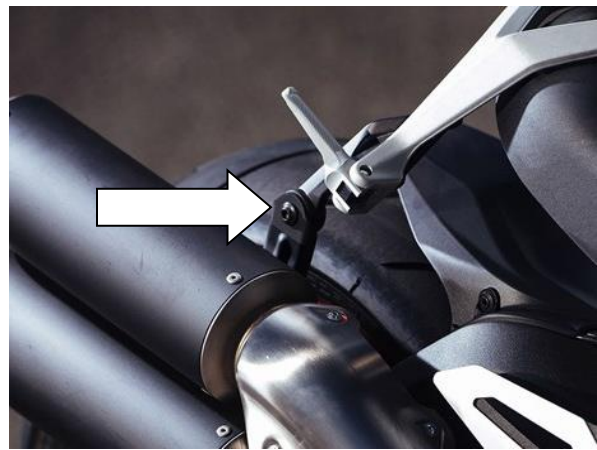


Photo 4



Photo 5



Photo 6

#### **Notice de montage :**

- Pour monter le support d'échappement R&G, le support de fixation repose pied d'origine doit être enlevé.
- Pour cela, enlever les 2 boulons de fixation situés à l'arrière du support de fixation repose pied, voir photo 1.
- A présent, enlever les 2 boulons de fixation avant. Vous pouvez y accéder par le dessous du bouclier thermique d'échappement via 2 trous, voir photos 2 & 3.
- Enlever l'écrou et le boulon qui fixent l'échappement en place sur le support de fixation repose pied passager, voir photo 4.
- Une fois le support de fixation repose pied passager enlevé, laissez tomber le bouclier thermique sur l'échappement pour donner suffisamment d'accès nécessaire pour enlever le support de fixation repose pied passager par l'arrière, voir photo 5.
- Prendre le support d'échappement R&G et montez le de ma même façon que le support de fixation repose pied passager a été enlevé. Monter en position entre le bouclier thermique et le passage de roue, en veillant à ce que le trou de fixation du support soit placé à l'intérieur du support d'échappement, voir photo 6. Ensuite, insérer un boulon M8 x 20mm et une rondelle M8 dans le trou avant d'insérer l'écrou d'origine sur le filetage à l'arrière.
- Réutilisez les 2 boulons de fixation avant puis placez les dans le bouclier thermique, avant de les passer dans le support d'échappement et de serrer légèrement dans le support de passage de roue.
- Insérer les 2 boulons M8 x 20mm restants dans les 2 supports les plus à l'arrière sur le support d'échappement avant de serrer légèrement dans le support de passage de roue.
- Veillez à ce que le support d'échappement soit correctement monté avant de serrer les 5 boulons.
- Assurez-vous qu'aucune partie ne puisse entrer en contact lorsque la moto sera en route. Cela pourrait créer des dommages à la moto. (Ce point est particulièrement important si vous utilisez un pot d'échappement qui n'est pas d'origine).

***Il est de votre responsabilité de vous assurer qu'aucune partie de l'ensemble support de pot d'échappement n'entre en contact avec une autre partie de la moto. Ne pas prendre la route sans avoir fait ces vérifications. Compresser l'amortisseur arrière pour jauger de cet aspect par exemple (si le design de la moto le permet).***



ISSUE 1 22/002/2016 (AR)

#### **CONSUMER NOTICE**

The catalogue description and any exhibition of samples are only broad indications of the Products and R&G may make design changes which do not diminish their performance or visual appeal and supplying them in such state shall conform to the order. The Buyer acknowledges no representation or warranty (other than as to title) has been given or will apply to the Products other than those in R&G's order or confirmation and the Buyer confirms it has chosen the Products as being of merchantable quality and suitable for its particular purposes. Where R&G fits the Products or undertakes other services it shall exercise reasonable skill and care and rectify any fault free of charge unless the workmanship has been disturbed. The Buyer is responsible for ensuring that the warranty on the motorcycle is not affected by the fitting of the Products. On return of any defective Products R&G shall at its option either supply a replacement or refund the purchase money but shall not be liable if the Products have been modified or used or maintained otherwise than in accordance with R&G's or manufacturer's instructions and good engineering practice or if the defect arises from accident or neglect. Other than identified above and subject to R&G not limiting its liability for causing death and personal injury, it shall not be liable for indirect or consequential loss and otherwise its liability shall be limited to the amounts paid by the Buyer for the Products or the fitting or service concerned. These terms do not affect the Buyer's statutory rights.

#### **R&G RACING RETURNS POLICY (NON-FAULTY GOODS)**

Returns must be pre-authorized (if not pre-authorized the return will be rejected). Goods may only be returned direct to us if they were purchased direct from us (customer must prove if necessary). Otherwise to be returned to original vendor. Goods must be in re-sellable condition, in the opinion of R&G Racing. All returns are subject to a 25% restocking and handling fee (25% of the gross value exc. P&P – at the prevailing price at time of purchase). The customer must pay any and all carriage charges. No returns of discontinued products, unless within 14 days of purchase. This policy does not affect your statutory rights and does not refer to faulty goods.

R&G Racing  
Unit 1, Shelley's Lane, East Worldham, Alton, Hampshire, GU34 3AQ  
Tel: +44 (0)1420 89007 Fax: +44 (0)1420 87301 [www.rg-racing.com](http://www.rg-racing.com) Email: [info@rg-racing.com](mailto:info@rg-racing.com)